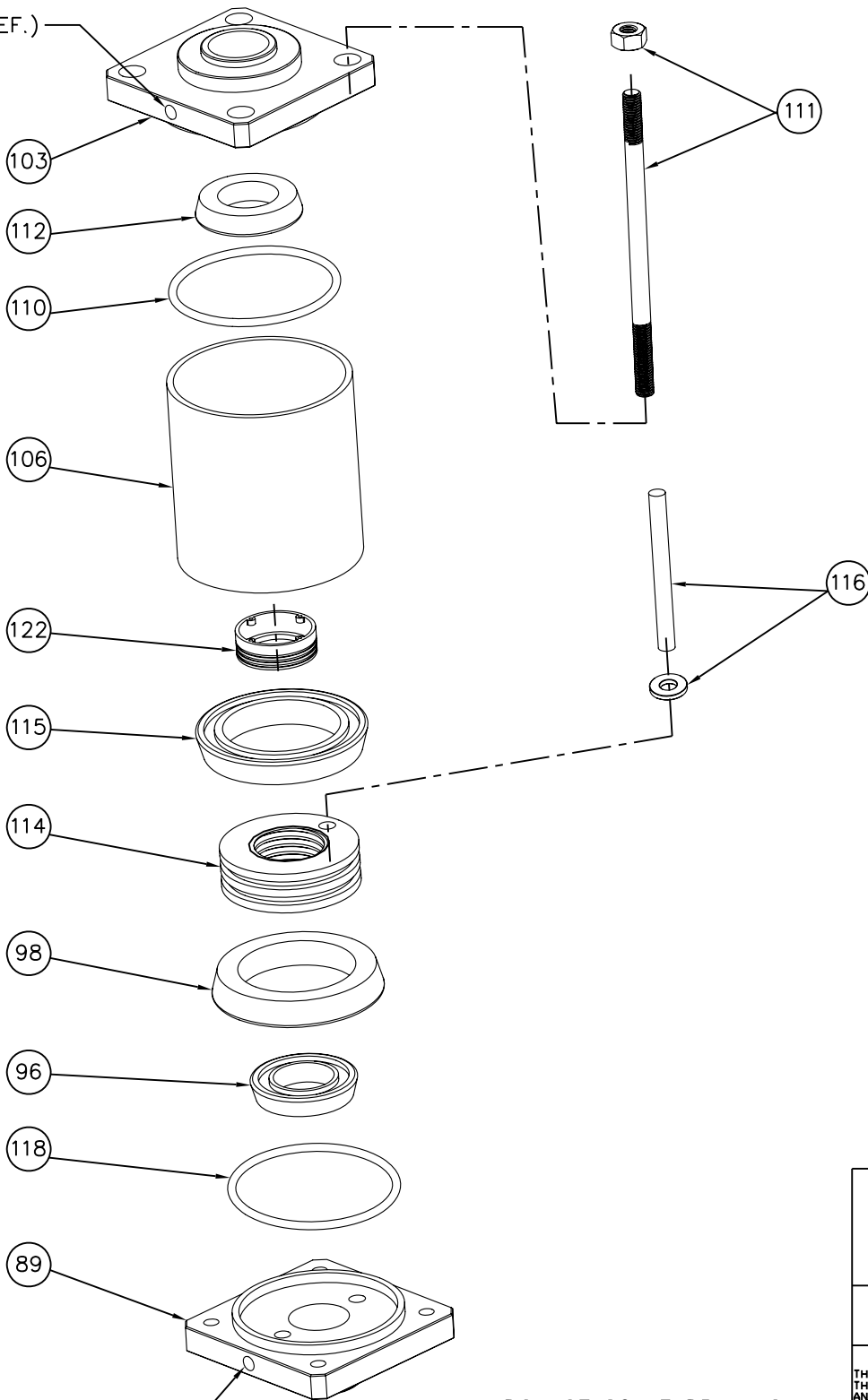


G 1/4 (REF.)



G 1/4 (REF.)

TOLERANCES
UNLESS OTHERWISE SPECIFIED

.XXXX	.0005
.XXX	.001
.XX	.01
ANG.	.5°

Δ	XXXXXXXX	XXXXXXXX
REV.	DATE	CHANGE

PROPRIETARY AND CONFIDENTIAL
 THE INFORMATION CONTAINED IN THE DRAWING IS THE SOLE PROPERTY OF MB METAL TECHNOLOGIES. ANY REPRODUCTION IN PART OR AS A WHOLE WITHOUT THE WRITTEN PERMISSION OF MB METAL TECHNOLOGIES IS PROHIBITED.

DO NOT SCALE DRAWING

NOTE: SEE SHEET 2 FOR IMPACT MECHANISM



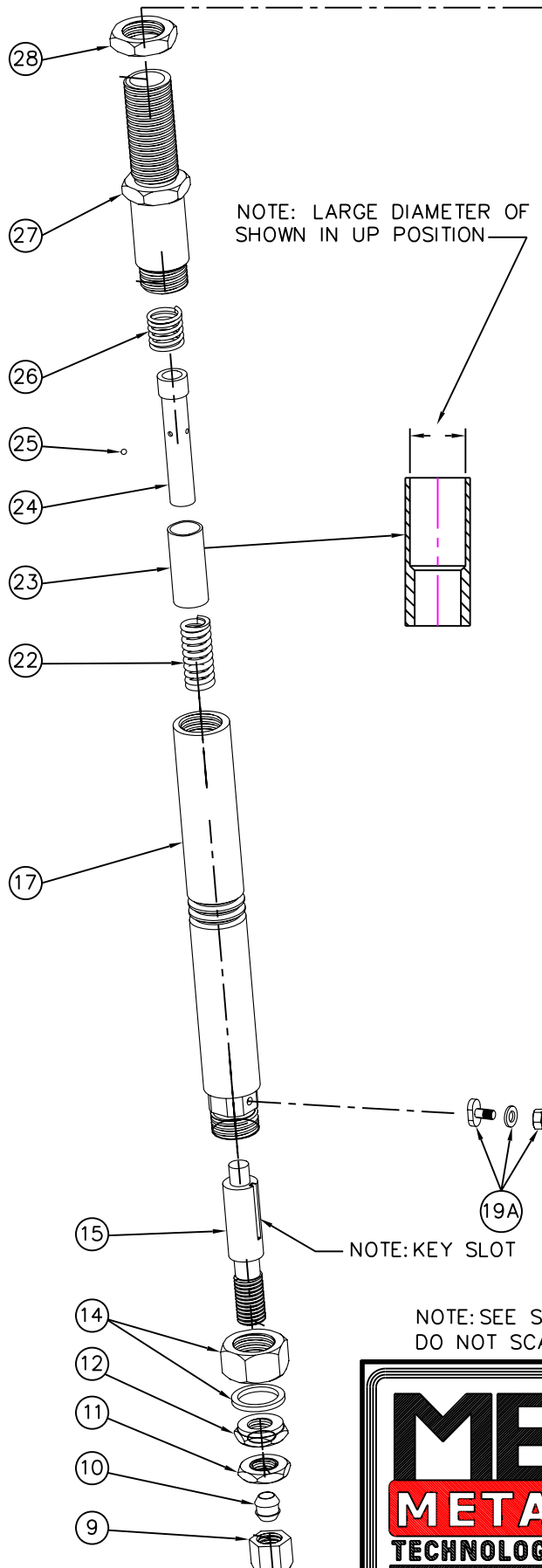
MB METAL TECHNOLOGIES

403 S. HAWLEY RD. MILWAUKEE, WI 53214-1997

SCALE: _____	APPROVED BY _____	DRAWN BY KDC
DATE: 6/2/10		

TITLE
 MV35VP-CYLINDER

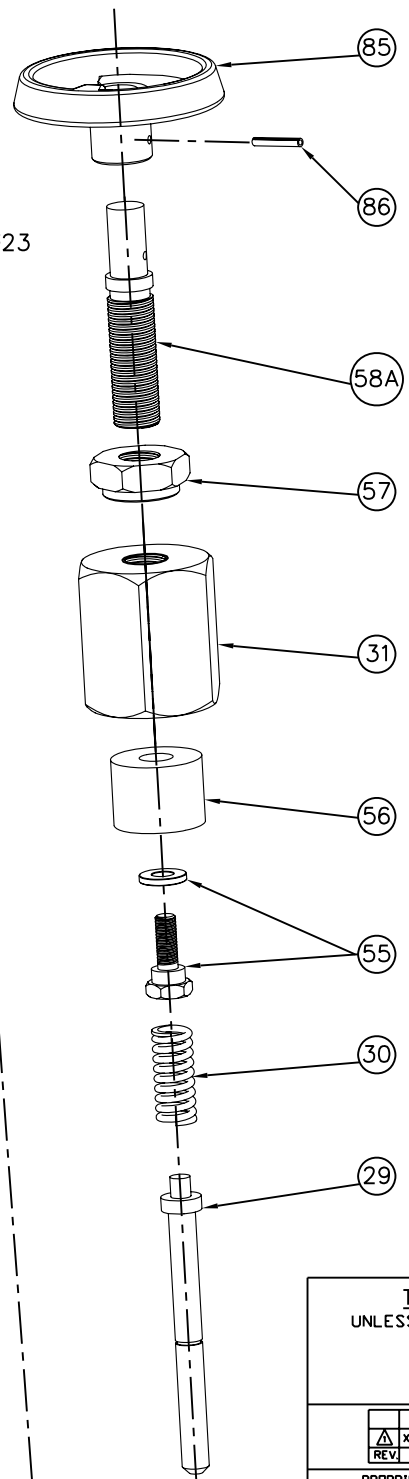
SIZE: C	DRAWING NUMBER: MV35VP-CYLINDER	SHEET 01 OF 03
---------	---------------------------------	----------------



NOTE: LARGE DIAMETER OF ITEM #23 SHOWN IN UP POSITION

NOTE: KEY SLOT

NOTE: SEE SHEET #1 FOR CYLINDER DO NOT SCALE DRAWING



TOLERANCES
UNLESS OTHERWISE SPECIFIED

.XXXX	.0005
.XXX	.001
.XX	.01
ANG.	.5°

△	XXXXXXXX	XXXXXXXX
REV.	DATE	CHANGE

PROPRIETARY AND CONFIDENTIAL
THE INFORMATION CONTAINED IN THE DRAWING IS THE SOLE PROPERTY OF MB METAL TECHNOLOGIES. ANY REPRODUCTION IN PART OR AS A WHOLE WITHOUT THE WRITTEN PERMISSION OF MB METAL TECHNOLOGIES IS PROHIBITED.

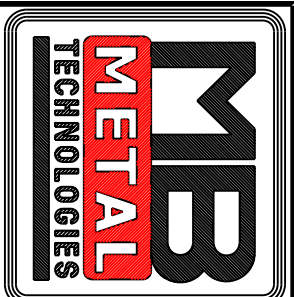


MB METAL TECHNOLOGIES
403 S. HAWLEY RD. MILWAUKEE, WI 53214-1997

SCALE: _____	APPROVED BY _____	DRAWN BY KDC
DATE: 6/3/10		
TITLE MV35VP CYLINDER IMPACT MECHANISM		
SIZE: C	DRAWING NUMBER: MV35 VP CYLINDER	SHEET 02 OF 03

ITEM #	ITEM DESCRIPTION
9	COLLET NUT
10	TOOL HOLDER COLLET 16mm I.D. USED WITH TOOL HOLDER ITEM #15
11	TRIP TRAVEL LOCK NUT
12	TRIP TRAVEL ADJUSTMENT NUT
14	LOCK NUT W/ELASTOMER INSERT (ASSEMBLY)
15	TOOL HOLDER
17	CENTRAL CYLINDER ROD
19A	TOOL HOLDER GUIDE KEY & LOCKNUT/WASHER
22	BUSHING RETURN SPRING
23	BEARING SLEEVE
24	TUBE GUIDE SLEEVE
25	BALL BEARING (6) 6mm DIAMETER
26	TUBE GUIDE RETURN SPRING
27	UPPER TUBE
28	UPPER TUBE LOCK NUT
29	HAMMER
30	IMPACT SPRING 7.5mm WIRE DIAMETER (STANDARD)
30A	IMPACT SPRING 7mm WIRE DIAMETER (OPTIONAL)
30B	IMPACT SPRING 6.5mm WIRE DIAMETER (OPTIONAL)
30C	IMPACT SPRING 6mm WIRE DIAMETER (OPTIONAL)
30D	IMPACT SPRING 5mm WIRE DIAMETER (OPTIONAL)
31	IMPACT SPRING ADJUSTMENT CAP
55	PLUNGER RETAINER SCREW & WASHER
56	SPRING CONTACT PLUNGER
57	ADJUSTMENT SCREW LOCKNUT
58A	IMPACT SPRING ADJUSTING SCREW
85	HANDWHEEL
86	ROLL PIN TO SECURE HANDWHEEL

ITEM #	ITEM DESCRIPTION
89	LOWER CYLINDER FLANGE
96	LOWER CYLINDER ROD SEAL
98	LOWER PISTON SEAL
103	UPPER CYLINDER FLANGE
106	CYLINDER SLEEVE
110	UPPER CYLINDER FLANGE SEAL
111	CYLINDER TIE ROD (4) W/NUTS
112	UPPER CYLINDER ROD SEAL
114/116	PISTON W/ANTI-ROTATION ROD & WASHER
115	UPPER PISTON SEAL
118	LOWER CYLINDER FLANGE SEAL
122	CENTRAL CYLINDER ROD RETAINER
KIT	CONTAINS ITEMS: 96/98/110/112/115/118



TOLERANCES
UNLESS OTHERWISE SPECIFIED

.XXXX	.0005
.XXX	.01
.XX	.5°
ANG.	

PROPRIETARY AND CONFIDENTIAL
THE INFORMATION CONTAINED IN THE DRAWING IS THE SOLE PROPERTY OF MB METAL TECHNOLOGIES. ANY REPRODUCTION IN PART OR AS A WHOLE WITHOUT THE WRITTEN PERMISSION OF MB METAL TECHNOLOGIES IS PROHIBITED.

Δ	XXXXXXXX	XXXXXXXX
REV.	DATE	CHANGE

MB METAL TECHNOLOGIES
403 S. HAWLEY RD. MILWAUKEE, WI 53214-1997

SCALE: _____ APPROVED BY _____ DRAWN BY KDC

DATE: 6/2/10

TITLE: MV35VP CYLINDER REPLACEMENT PARTS

SIZE: C DRAWING NUMBER: MV35VP SHEET 03 OF 03