

MV23VPS Air Impact Unit 3-3/4 Ton

Ergonomic Efficiency, Marking Versatility

While similar in marking capability to our mechanical models, the MV23VPS uses an air cylinder to ensure minimum exertion by the operator. Highly-repeatable jobs can be handled with confidence of ergonomic compliance. The MV23VPS uses 7,500 pounds high impact force in countless applications and is designed for use in indexing tables, transfer systems or assembly machines.

The adjustable impact force remains constant and is not altered by length of stroke, but by adjustment of spring compression. MB Metal Technologies offers a variety of springs for lighter or heavier marking, depending on the substrate to be marked. All MB Metal Technologies air impact models are double acting. They can be activated by a manual or remote valve. Two-hand and foot controls are available. See "Accessories."

The MV23VP easily tackles high production volume jobs and adapts to a wide variety of applications, using available tool inserts and marking heads. Units operate in any position and mount at either end using four tie rods with extended threads. The clean, simple design has few operating parts, reducing maintenance.



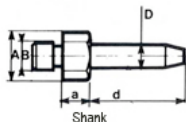
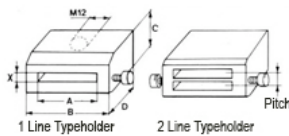
Applications Include:

- | | |
|---------------|-----------------|
| Marking | Numbering |
| Crimping | Peening |
| Embossing | Shaping |
| Piercing | Riveting |
| Press Fitting | Center Punching |
| Stamping | Serializing |

MV23VP Type Capacity Per Impact Press or Cylinder		
Height	Aluminum	Mild Steel
1mm	47	25
1.5mm	44	23
2mm	38	20
2.5mm	34	19
3mm	30	16
4mm	24	11
5mm	20	8
6mm	16	5

Specifications:

Max. Impact Force	3-3/4 Ton (7,500 lbs)
Mounting Holes	10mm
Std. Max. Approach Travel	40mm
Collet Diameter/Depth	10mm
Depth of Tool Holder	30mm
Required Air Pressure	60-90 psi (4-6 bar)
Max. Strokes Per Minute	50
Unit Weight	18 lbs (8.16kg)



Type Set

- Downloads:**
- MV23VPS Drawing.pdf
 - Replacement Parts.pdf
 - MV23VPS Spec Sheet.pdf

CAD files are available upon request. Please [contact us](#) for details.



403 S Hawley Rd • Milwaukee, WI 53214-1997 • (800) 837-9270 • www.mbmataltech.com
© 2009 Mbmatal North America, LLC. All rights reserved.