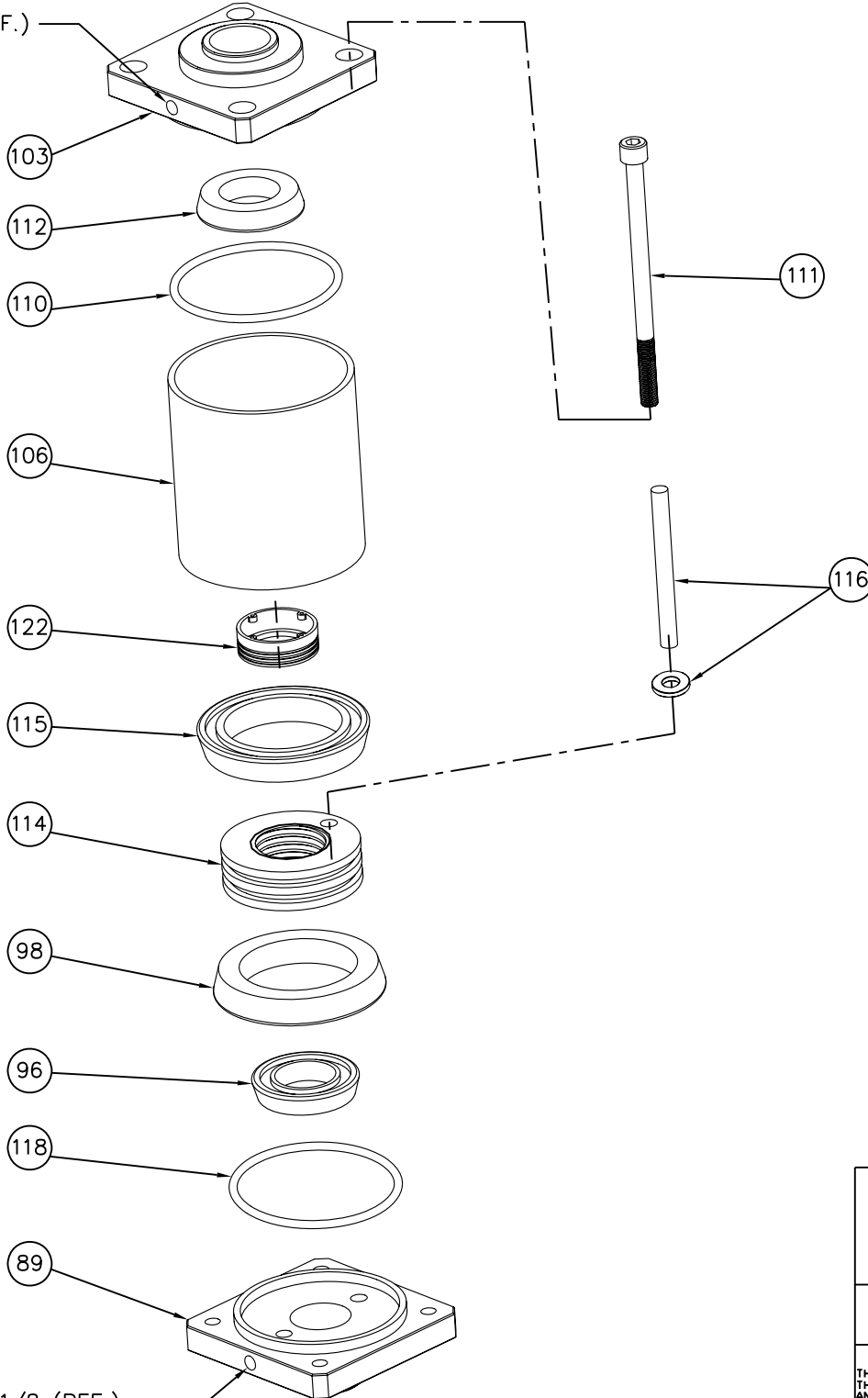


G 1/8 (REF.)



G 1/8 (REF.)

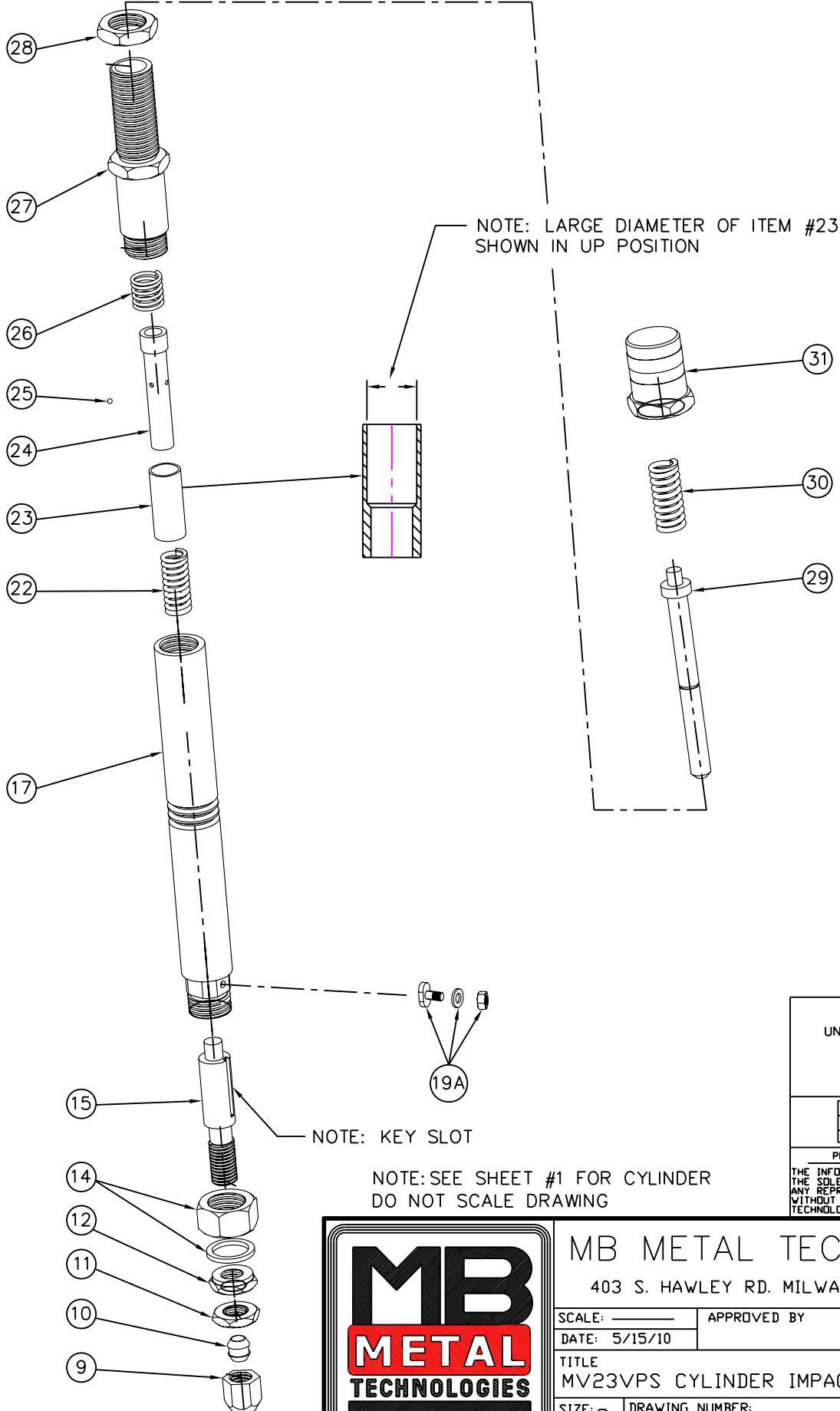
DO NOT SCALE DRAWING

NOTE: SEE SHEET 2 FOR  
IMPACT MECHANISM

| TOLERANCES<br>UNLESS OTHERWISE SPECIFIED                                                                                                                                                              |          |          |
|-------------------------------------------------------------------------------------------------------------------------------------------------------------------------------------------------------|----------|----------|
| .XXXX                                                                                                                                                                                                 | .0005    |          |
| .XXX                                                                                                                                                                                                  | .001     |          |
| .XX                                                                                                                                                                                                   | .01      |          |
| ANG.                                                                                                                                                                                                  | .5°      |          |
| △                                                                                                                                                                                                     | XXXXXXXX | XXXXXXXX |
| REV.                                                                                                                                                                                                  | DATE     | CHANGE   |
| PROPRIETARY AND CONFIDENTIAL                                                                                                                                                                          |          |          |
| THE INFORMATION CONTAINED IN THE DRAWING IS THE SOLE PROPERTY OF MB METAL TECHNOLOGIES. ANY REPRODUCTION IN PART OR AS A WHOLE WITHOUT THE WRITTEN PERMISSION OF MB METAL TECHNOLOGIES IS PROHIBITED. |          |          |



|                                            |                                     |                |
|--------------------------------------------|-------------------------------------|----------------|
| MB METAL TECHNOLOGIES                      |                                     |                |
| 403 S. HAWLEY RD. MILWAUKEE, WI 53214-1997 |                                     |                |
| SCALE: _____                               | APPROVED BY _____                   | DRAWN BY KDC   |
| DATE: 5/19/10                              |                                     |                |
| TITLE<br>MV23VPS-CYLINDER                  |                                     |                |
| SIZE: C                                    | DRAWING NUMBER:<br>MV23VPS-CYLINDER | SHEET 01 OF 03 |



NOTE: LARGE DIAMETER OF ITEM #23 SHOWN IN UP POSITION

NOTE: KEY SLOT

NOTE: SEE SHEET #1 FOR CYLINDER DO NOT SCALE DRAWING

| TOLERANCES                 |       |
|----------------------------|-------|
| UNLESS OTHERWISE SPECIFIED |       |
| .XXXX                      | .0005 |
| .XXX                       | .001  |
| .XX                        | .01   |
| ANG.                       | .5°   |

|      |          |          |
|------|----------|----------|
| △    | XXXXXXXX | XXXXXXXX |
| REV. | DATE     | CHANGE   |

PROPRIETARY AND CONFIDENTIAL

THE INFORMATION CONTAINED IN THE DRAWING IS THE SOLE PROPERTY OF MB METAL TECHNOLOGIES. ANY REPRODUCTION IN PART OR AS A WHOLE WITHOUT THE WRITTEN PERMISSION OF MB METAL TECHNOLOGIES IS PROHIBITED.



**MB METAL TECHNOLOGIES**  
 403 S. HAWLEY RD. MILWAUKEE, WI 53214-1997

|                                            |                                     |                |
|--------------------------------------------|-------------------------------------|----------------|
| SCALE: _____                               | APPROVED BY _____                   | DRAWN BY KDC   |
| DATE: 5/15/10                              |                                     |                |
| TITLE<br>MV23VPS CYLINDER IMPACT MECHANISM |                                     |                |
| SIZE: C                                    | DRAWING NUMBER:<br>MV23VPS CYLINDER | SHEET 02 OF 03 |

| ITEM #  | ITEM DESCRIPTION                                            |
|---------|-------------------------------------------------------------|
| 9       | COLLET NUT                                                  |
| 10      | TOOL HOLDER COLLET 10mm I.D. USED WITH TOOL HOLDER ITEM #15 |
| 11      | TRIP TRAVEL LOCK NUT                                        |
| 12      | TRIP TRAVEL ADJUSTMENT NUT                                  |
| 14      | LOCK NUT W/ELASTOMER INSERT (ASSEMBLY)                      |
| 15      | TOOL HOLDER                                                 |
| 17      | CENTRAL CYLINDER ROD                                        |
| 19A     | TOOL HOLDER GUIDE KEY & LOCKNUT/WASHER                      |
| 22      | BUSHING RETURN SPRING                                       |
| 23      | BEARING SLEEVE                                              |
| 24      | TUBE GUIDE SLEEVE                                           |
| 25      | BALL BEARING (6) 3.5mm DIAMETER                             |
| 26      | TUBE GUIDE RETURN SPRING                                    |
| 27      | UPPER TUBE                                                  |
| 28      | UPPER TUBE LOCK NUT                                         |
| 29      | HAMMER                                                      |
| 30      | IMPACT SPRING 4mm WIRE DIAMETER (STANDARD)                  |
| 30A     | IMPACT SPRING 3.6mm WIRE DIAMETER (OPTIONAL)                |
| 30B     | IMPACT SPRING 3.2mm WIRE DIAMETER (OPTIONAL)                |
| 30C     | IMPACT SPRING 3mm WIRE DIAMETER (OPTIONAL)                  |
| 30D     | IMPACT SPRING 2.5mm WIRE DIAMETER (OPTIONAL)                |
| 31      | IMPACT SPRING ADJUSTMENT CAP                                |
| 89      | LOWER CYLINDER FLANGE                                       |
| 96      | LOWER CYLINDER ROD SEAL                                     |
| 98      | LOWER PISTON SEAL                                           |
| 103     | UPPER CYLINDER FLANGE                                       |
| 106     | CYLINDER SLEEVE                                             |
| 110     | UPPER CYLINDER FLANGE SEAL                                  |
| 111     | CYLINDER TIE ROD (4) W/NUTS                                 |
| 112     | UPPER CYLINDER ROD SEAL                                     |
| 114/116 | PISTON W/ANTI-ROTATION ROD & WASHER                         |
| 115     | UPPER PISTON SEAL                                           |
| 118     | LOWER CYLINDER FLANGE SEAL                                  |
| 122     | CENTRAL CYLINDER ROD RETAINER                               |
| KIT     | CONTAINS ITEMS: 96/98/110/112/115/118                       |



|                                          |        |
|------------------------------------------|--------|
| TOLERANCES<br>UNLESS OTHERWISE SPECIFIED |        |
| .XXXX                                    | .0005  |
| .XXX                                     | .001   |
| .XX                                      | .01    |
| ANG.                                     | 5°     |
| REV                                      | DATE   |
| Δ XXXXXXXX                               | XXXXXX |
| CHANGE                                   |        |

**MB METAL TECHNOLOGIES**  
 403 S. HAWLEY RD. MILWAUKEE, WI 53214-1997  
 SCALE: \_\_\_\_\_ APPROVED BY \_\_\_\_\_ DRAWN BY KDC  
 DATE: 5/19/10  
 TITLE: MB METAL TECHNOLOGIES  
 MV23VPS CYLINDER REPLACEMENT PARTS  
 SIZE: C DRAWING NUMBER: MV23VPS CYLINDER SHEET 03 OF 03

PROPRIETARY AND CONFIDENTIAL  
 THE INFORMATION CONTAINED IN THIS DRAWING IS THE SOLE PROPERTY OF MB METAL TECHNOLOGIES AND IS NOT TO BE REPRODUCED OR TRANSMITTED IN ANY FORM OR BY ANY MEANS, WITHOUT THE WRITTEN PERMISSION OF MB METAL TECHNOLOGIES IS PROHIBITED.